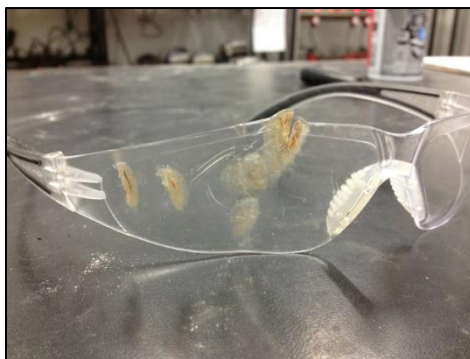


# Eye Protection

Nearly **8,000 construction employees suffer an eye injury each year**. That averages to over **20 employees a day**. Some of those injuries will cause permanent blindness, forever changing their lives and their families.

Many eye injuries do not occur because employees fail to wear safety glasses. In fact, many eye injuries occur when safety glasses are being used. Today, we want to look at different ways eye injuries occur on the job. Let's look at some history of actual eye injuries, their causes, and answer the question: "How do eye injuries happen when safety glasses are being worn?"

- Glasses being worn improperly. Wearing glasses down on the nose will not properly protect the eyes. This often happens when your safety glasses are too dirty, scratched, or fogged up. Take care of your glasses and replace them when necessary.
- Even when glasses are worn properly, 'cutting' your eyes and looking over the top of your glasses creates an opening for debris to fall. Bend your neck and look directly at your work.
- When operating a screw gun just above the ground, we often turn the screw gun sideways. The vent from the gun can easily blow dust or metal shavings on the ground up into your eye.
- When lifting any kind of material overhead, debris on the material often falls off and into the eye. Even with glasses on, debris from above can easily fall behind your glasses.
- Perspiration can easily 'wash' debris into your eye when you are working in hot environments. Often, we reach up and wipe the sweat from our eyes with our hands. Many times, debris from your hand is rubbed into the eye.
- We often work in windy conditions, (i.e. window openings, elevator shafts, fans, etc.). Wind blows debris into the air as well as into the eye.
- When cutting metal or screwing overhead, the metal shavings often fly or fall onto our hardhats, or even settle on the top of our safety glasses. In addition, we often use full- face shields to protect our eyes. When we take our hat off or raise the face-shield, the debris falls directly over the eyes. You should always bend over, take your hardhat & glasses off, and clean them before you proceed. Remember, safety glasses are designed deflect flying debris.



Jobsite: \_\_\_\_\_ Date: \_\_\_\_\_

Employee Name (Please Print)	Employee Signature